

MOSQUITO PRODUCTION

SINCE the cessation of hostilities, the output of De Havilland Mosquito aircraft has been progressively reduced in accordance with RAAF requirements, and in order to obtain economic operation the full manufacturing facilities used on this project have been concentrated at the Bankstown Aerodrome. During the war period, a large amount of this work was carried out at De Havilland factories located in various Sydney

suburbs. The concentration of all facilities at Bankstown has now resulted in one aircraft factory equipped to carry out all the necessary operations. The balance of aircraft to be delivered to the RAAF are all special purpose machines, mostly Dual Trainer Mosquitos and special Photographic Reconnaissance aircraft. These machines require major alterations to the previous standard production aircraft and embody many local design features.

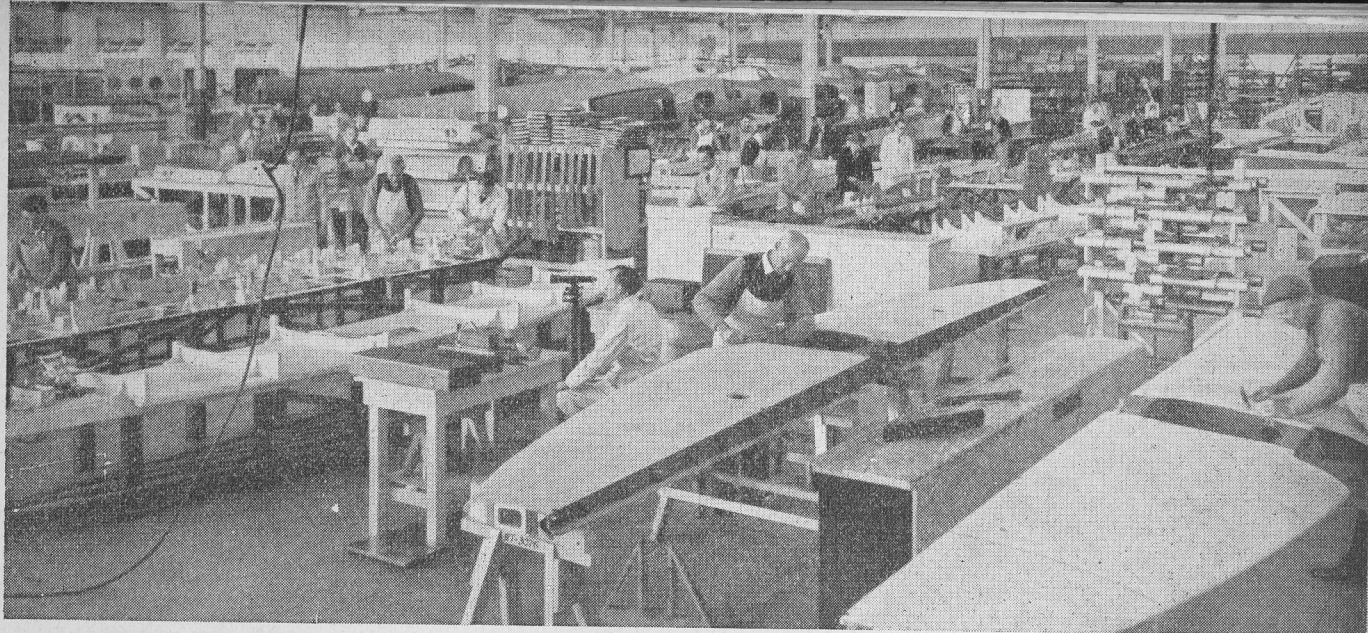
AIRCRAFT, September, 1946. Page 24



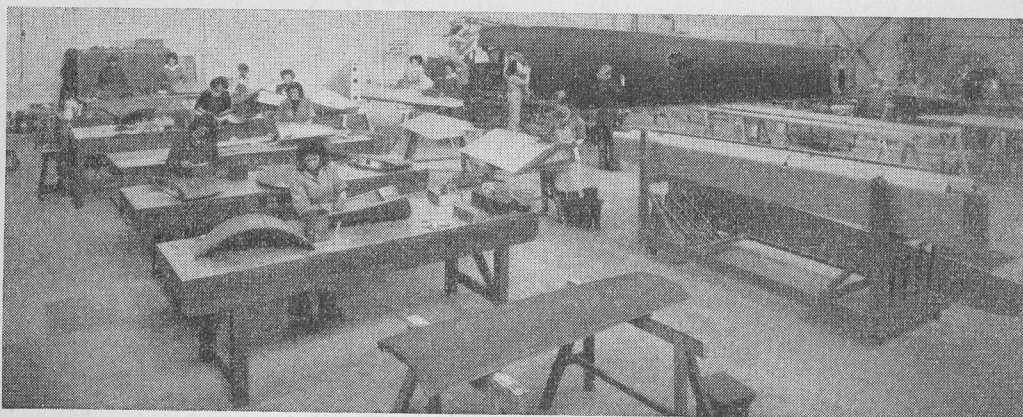
The combined machine shop and toolroom. In the foreground can be seen a small portion of the wood tooling section, which is engaged in the production of economic tools and templates.

The fitting shop and metal component shop. With the present smaller quantity production, the amount of hand work has increased, and most of the men employed in this shop are now skilled men capable of working from blue prints.

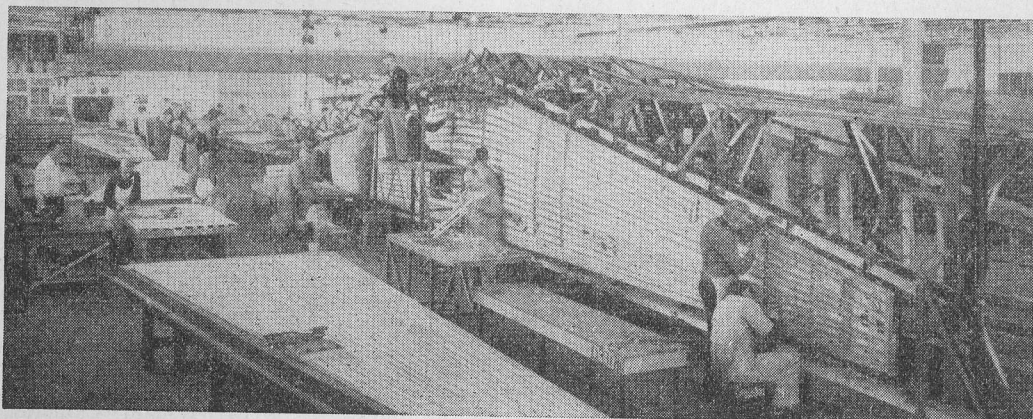




Components shop. Originally located in a Sydney furniture factory, it is now located close to fuselage and wing assembly, for which most of the components are required.



Fabric and dope shop. This is completely equipped with modern air conditioning and ventilating systems. In this picture can be seen a fuselage, bomb door, set of ailerons, wing flap, set of wing tips, Browning gun doors, fuselage rear fairings, a fin, tail-plane and fuselage.



Wing assembly. In the background the assembly of the leading edges and wing shrouds is taking place. In the foreground can be seen the outer ply skin prior to its assembly and gluing to the wing. This work was previously carried out by General Motors-Holdens at Page-wood.

AIRCRAFT,
September 1946
Page 25

Final assembly line. This is now half the length required for the assembly of Mosquitos prior to reduction.

